

## ABOUT SMHI

SMHI, the Swedish Meteorological and Hydrological Institute, is an expert agency under the Ministry of the Environment. Through expertise in meteorology, hydrology, oceanography and climatology, SMHI contributes towards greater public welfare, increased safety and a sustainable society.

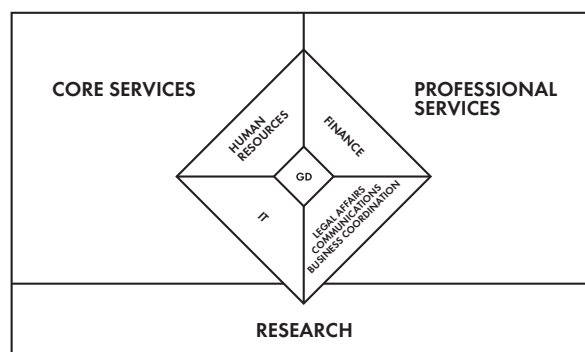


SMHI administers and develops information about the weather, water and climate that provides social functions, trade and industry and the general public with knowledge and qualified decision guidance. National and international cooperation are extensive.

SMHI offers tailored products and services that form the basis of important decision guidance for different activities. General forecasts and warnings, industry-specific services, simulations and analyses, statistics, climate studies and research assignments are just a few examples.

### AGENCIES AND BUSINESS PARTNERS

SMHI's activities are primarily financed in three ways: through grants, through commissions from other agencies and through business activities on commercial terms. There are distinct lines of activity that naturally are different, yet still based on the same fundamental principle, to contribute to greater public welfare, safety and a sustainable society.



The Core Services, Professional Services and Research Departments provide services for various customers in different sections of society. The IT, Finance and Human Resources Departments are responsible for management, coordination and service within their respective areas. In addition, there are organisation-wide functions for Legal Affairs, Communication and Business Coordination.

**FROM OBSERVATION TO DECISION GUIDANCE**

Air and water are essential for life on earth and an important part of our environment. SMHI makes its observations and measurements at ground-based observation stations, with balloon-borne instruments as well as from aircraft, ships and buoys. Satellites, weather radar and lightning sensors supply spatial information. Collected data are structured, processed and analysed using very powerful computers.

SMHI makes forecasts, produces decision guidance for the community and follows up climate and environmental development. SMHI's operations run around the clock every day of the year. Warnings in the event of extreme weather events are an important task.

SMHI provides a wide range of forecasting and professional services tailored to the needs of different users. In addition to industry-specific forecasting services, a large part of the assignments deal with climate and environmental issues related to air and water. Some examples are tailored climate analysis for urban planning, decision guidance for wind power and providing design data for water flows and water levels. Customers can be found nationally and internationally in the areas of social structure, energy, environment, shipping, media and capacity development. Target groups include commercial customers, agencies and individuals.

**RESEARCH AND DEVELOPMENT**

SMHI conducts applied research in meteorology, hydrology, oceanography and climate.

The research department develops knowledge, models and tools that describe processes in the atmosphere, in the sea and on land. These are needed to improve SMHI forecast models and decision guidance for practical public welfare.

A great deal of the research conducted by SMHI is climate related. Researchers develop climate models, produce climate scenarios and participate in impact and adaptation studies. Mathematical models and methods that utilise data from satellites, radar systems and other observations are key in the research.

SMHI's research is mainly externally funded. Researchers collaborate in Swedish research projects, EU projects and other international projects.

**CLIMATE WORK IN FOCUS**

SMHI runs a national centre of knowledge for adaptation to climate change on behalf of the government at SMHI. The role of the centre is to act as a hub for knowledge about climate change and to be a meeting place for actors involved in climate change adaptation.

SMHI is the contact point in Sweden for the UN's climate panel, the Intergovernmental Panel on Climate Change (IPCC). As the contact point, SMHI coordinates the Swedish IPCC work and establishes contacts with the IPCC Secretariat in Geneva. Responsibility also entails nominating Swedish experts for the IPCC work. This can be in the role of author, reviewer or participating in workshops and other meetings

**SMHI IN BRIEF**

- Providing planning and decision guidance for weather and water dependent activities.
- Society's expert body in meteorology, hydrology, oceanography and climatology.
- Applied research in meteorology, hydrology, oceanography and climate.
- SMHI has an annual turnover of SEK 916 million and little over 670 employees.
- SMHI has its head office in Norrköping and also has offices in Malmö, Gothenburg and Uppsala.
- In 2013 SMHI was named Sweden's Most Modern Agency.
- SMHI management system is certified by Lloyds Register Quality Assurance, LRQA and complies with ISO 9001 and ISO 140 01.

