

ICE CHART ISKARTA

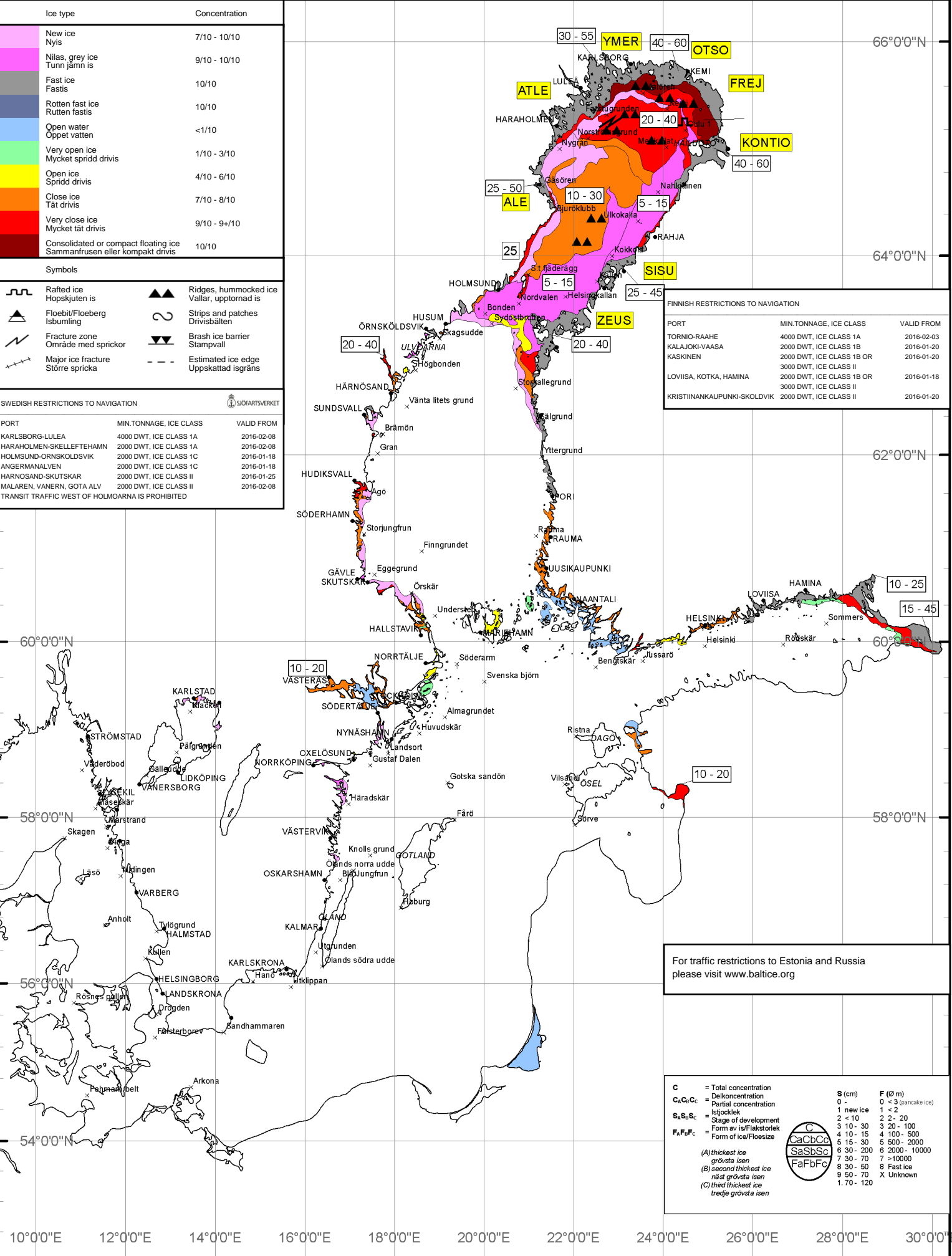
VALID DATE: 2016-02-25

Ice type	Concentration
New ice Nyis	7/10 - 10/10
Nilas, grey ice Tunn jämn is	9/10 - 10/10
Fast ice Fastis	10/10
Rotten fast ice Rutten fastis	10/10
Open water Öppet vatten	<1/10
Very open ice Mycket spridd drivis	1/10 - 3/10
Open ice Spridd drivis	4/10 - 6/10
Close ice Tät drivis	7/10 - 8/10
Very close ice Mycket tät drivis	9/10 - 9+10
Consolidated or compact floating ice Sammanfrusen eller kompakt drivis	10/10

Symbols	
	Rafted ice Hopskjutet is
	Floebit/Floeberg Isbumling
	Fracture zone Område med sprickor
	Major ice fracture Större spricka
	Ridges, hummocked ice Vallar, upptornad is
	Strips and patches Drivisbälten
	Brash ice barrier Stampvall
	Estimated ice edge Uppskattad isgräns

SWEDISH RESTRICTIONS TO NAVIGATION		
PORT	MIN. TONNAGE, ICE CLASS	VALID FROM
KARLSBORG-LULEA	4000 DWT, ICE CLASS 1A	2016-02-08
HARAHOLMEN-SKELLEFFEHAMN	2000 DWT, ICE CLASS 1A	2016-02-08
HOLMSUND-ORNSKOLDSVIK	2000 DWT, ICE CLASS 1C	2016-01-18
ANGERMALÄN	2000 DWT, ICE CLASS 1C	2016-01-18
HÄRNÖSAND-SKUTSKÄR	2000 DWT, ICE CLASS II	2016-01-25
MALÄREN, VANERN, GOTA ALV	2000 DWT, ICE CLASS II	2016-02-08

TRANSIT TRAFFIC WEST OF HOLMOARNA IS PROHIBITED



FINNISH RESTRICTIONS TO NAVIGATION		
PORT	MIN. TONNAGE, ICE CLASS	VALID FROM
TORNIO-RAAHE	4000 DWT, ICE CLASS 1A	2016-02-03
KALAJOKI-VAASA	2000 DWT, ICE CLASS 1B	2016-01-20
KASKINEN	2000 DWT, ICE CLASS 1B OR	2016-01-20
LOVIISA, KOTKA, HAMINA	2000 DWT, ICE CLASS 1B OR	2016-01-18
KRISTINANKAUPUNKI-SKOLDVIK	2000 DWT, ICE CLASS II	2016-01-20

For traffic restrictions to Estonia and Russia please visit www.baltice.org

C	S (cm)	F (Ø m)
C	0 -	0 < 3 (pancake ice)
C ₁ C ₂ C ₃	1	1 - 2
C ₁ C ₂ C ₃ C ₄	2 < 10	2 - 20
C ₁ S ₁ S ₂ S ₃	3 10 - 30	3 20 - 100
C ₁ F ₁ F ₂ F ₃	4 10 - 15	4 100 - 500
C ₁ F ₁ F ₂ F ₃ C ₄	5 15 - 30	5 500 - 2000
C ₁ F ₁ F ₂ F ₃ C ₄ C ₅	6 30 - 200	6 2000 - 10000
C ₁ F ₁ F ₂ F ₃ C ₄ C ₅ C ₆	7 30 - 70	7 > 10000
C ₁ F ₁ F ₂ F ₃ C ₄ C ₅ C ₆ C ₇	8 30 - 50	8 Fast ice
C ₁ F ₁ F ₂ F ₃ C ₄ C ₅ C ₆ C ₇ C ₈	9 50 - 70	X Unknown
C ₁ F ₁ F ₂ F ₃ C ₄ C ₅ C ₆ C ₇ C ₈ C ₉	1.70 - 120	

(A) thickest ice
grövsta isen
(B) second thickest ice
näst grövsta isen
(C) third thickest ice
tredje grövsta isen