

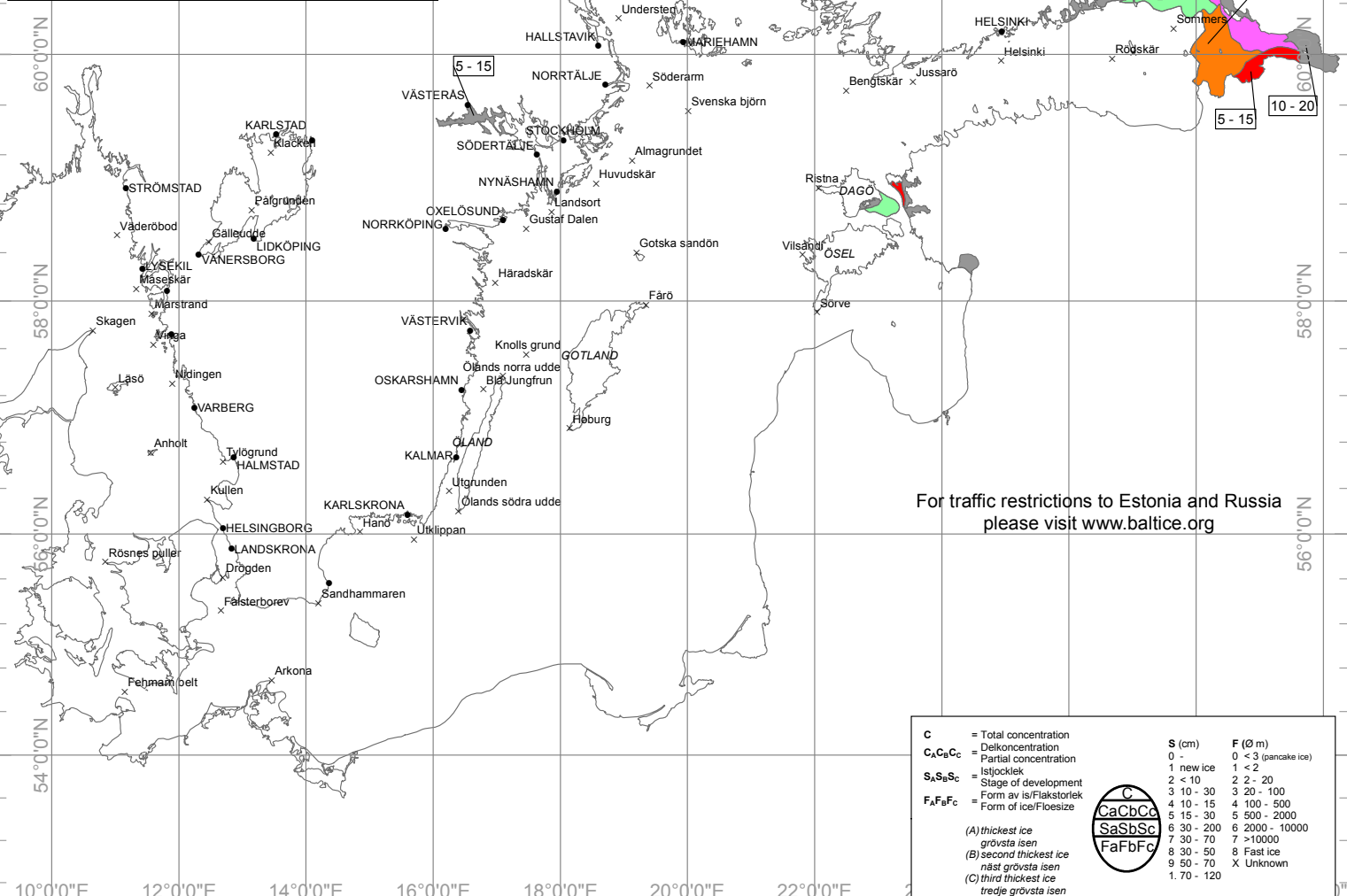
| Ice Type | Concentration |
|--|---------------|
| Open water Öppet vatten | >1/10 |
| Open new ice Spridd nyis | 4/10 - 6/10 |
| New ice Nyis | 7/10 - 10/10 |
| Very open ice Mycket spridd drivis | 1/10 - 3/10 |
| Open ice Spridd drivis | 4/10 - 6/10 |
| Level ice Jämn is | 7/10 - 10/10 |
| Close ice Tät drivis | 7/10 - 8/10 |
| Very close or compact ice Mycket tät eller kompakt drivis | 9/10 - 9+/10 |
| Fast ice Fastis | 10/10 |

| Symbols | |
|---------|-----------------------|
| | Rafted ice |
| | Hopskjuten is |
| | Floebit / floeberg |
| | Isbumling |
| | Presence of cracks |
| | Område med sprickor |
| | Mayor ice fracture |
| | Större spricka |
| | Ridges, hummocked ice |
| | Vallar, upptornad is |
| | Strips and patches |
| | Drivisbälten |
| | Brash ice barrier |
| | Stampisvall |
| | Estimated ice edge |
| | Uppskattad isgräns |

| SWEDISH RESTRICTIONS TO NAVIGATION | | |
|------------------------------------|--|------------|
| PORT | MIN. TONNAGE, ICE CLASS | VALID FROM |
| KARLSBORG-LULEÅ | 2000 DWT, ICE CLASS IA | 2015-01-31 |
| HARAHOLMEN-SKELLEFTEHAMN | 2000 DWT, ICE CLASS IB | 2015-01-21 |
| HOLMSUND | 2000 DWT, ICE CLASS IC | 2015-01-26 |
| ÅNGERMANÄLVEN | 2000 DWT, ICE CLASS II | 2015-01-26 |
| RUNDEVIK-ÖRNSKÖLDSVIK | 2000 DWT, ICE CLASS II | 2015-01-26 |
| LAKE MÅLAREN | 1300 DWT, ICE CLASS IC or 2000 DWT, ICE CLASS II | 2015-01-05 |

VESSELS BOUND FOR PORTS IN BAY OF BOTHNIA SUBJECT TO ICE RESTRICTIONS: WHEN PASSING SVENSKA BJÖRN N59 33 E20 01 CALL "ICE INFO" ON CHANNEL 8.4

| FINNISH RESTRICTIONS TO NAVIGATION | | |
|---|-------------------------|------------|
| PORT | MIN. TONNAGE, ICE CLASS | VALID FROM |
| TORNIO, KEMI, OULO | 2000 DWT, ICE CLASS IA | 2015-01-31 |
| RAAHE, RAHJA, KOKKOLA, PIETARSAARI, VAASA | 2000 DWT, ICE CLASS IB | 2015-01-10 |
| KASKINEN, LOVIISA, KOTKA, HAMINA | 2000 DWT, ICE CLASS II | 2015-01-19 |
| TORNIO, KEMI, OULO | 2000 DWT, ICE CLASS IA | 2015-01-31 |



For traffic restrictions to Estonia and Russia please visit www.baltice.org

| | | | |
|--|--------------------------|---------------|---------------------|
| C | = Total concentration | S (cm) | F (Ø m) |
| C_AC_BC_C | = Delconcentration | 0 - | 0 < 3 (pancake ice) |
| S_AS_BS_C | = Istjocklek | 1 new ice | 1 < 2 |
| F_AF_BF_C | = Form av is/Flakstorlek | 2 < 10 | 2 2 - 20 |
| | = Form of ice/Flaesize | 3 10 - 30 | 3 20 - 100 |
| | | 4 10 - 15 | 4 100 - 500 |
| | | 5 15 - 30 | 5 500 - 2000 |
| | | 6 30 - 200 | 6 2000 - 10000 |
| | | 7 30 - 70 | 7 > 10000 |
| | | 8 30 - 50 | 8 Fast ice |
| | | 9 50 - 70 | X Unknown |
| | | 1 70 - 120 | |