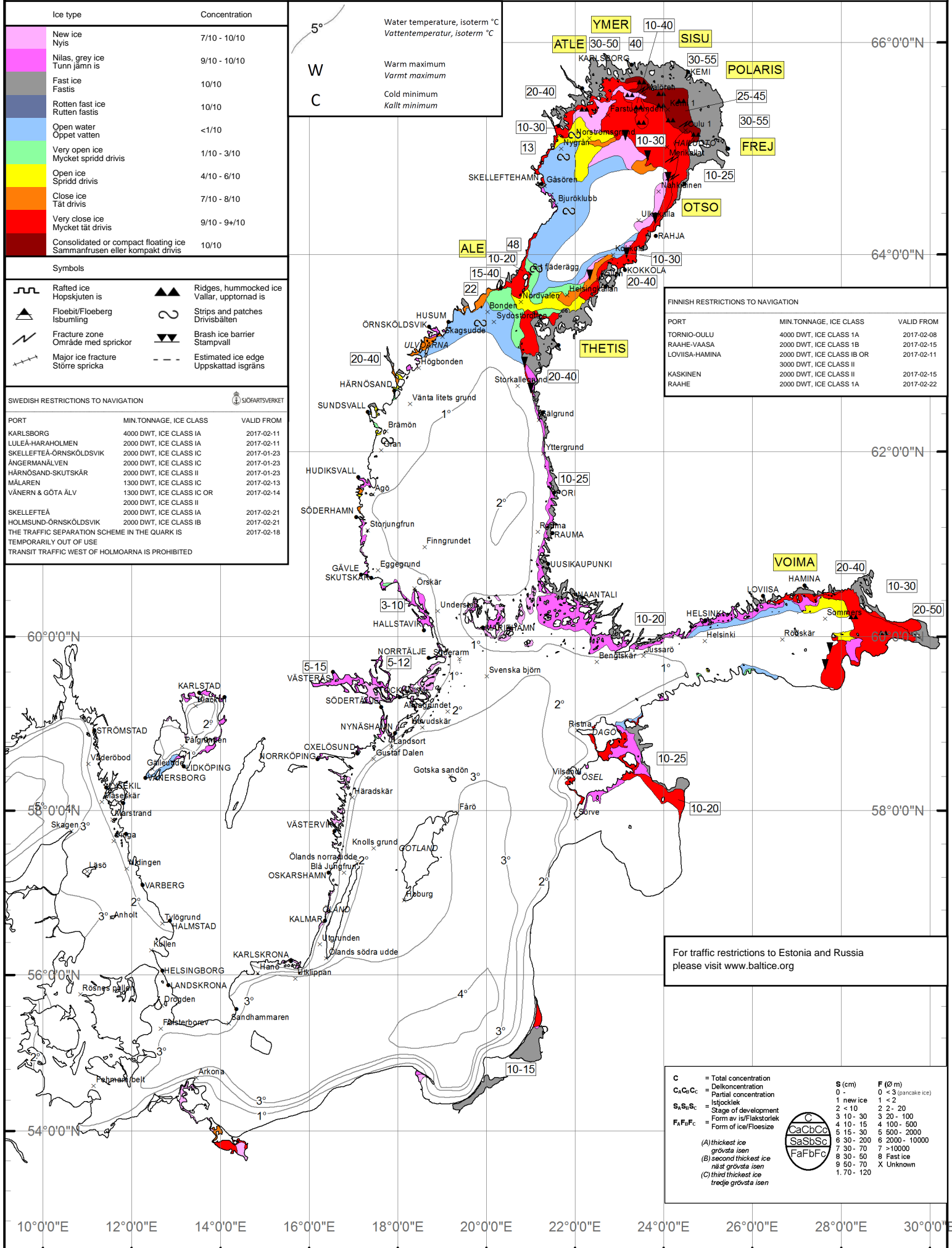


### ICE & SEA SURFACE TEMPERATURE IS & YTVATTENTEMPERATUR

VALID DATE: 2017-02-20



Ice type	Concentration
New ice Nyis	7/10 - 10/10
Nilas, grey ice Tunn jämn is	9/10 - 10/10
Fast ice Fastis	10/10
Rotten fast ice Rutten fastis	10/10
Open water Öppet vatten	<1/10
Very open ice Mycket spridd drivis	1/10 - 3/10
Open ice Spridd drivis	4/10 - 6/10
Close ice Tät drivis	7/10 - 8/10
Very close ice Mycket tät drivis	9/10 - 9+10
Consolidated or compact floating ice Sammanfrusen eller kompakt drivis	10/10

Symbols		
	Rafted ice Hopskjuten is	
	Floe bit/Floeberg Isbumbing	
	Fracture zone Område med sprickor	
	Major ice fracture Större spricka	

SWEDISH RESTRICTIONS TO NAVIGATION		
PORT	MIN. TONNAGE, ICE CLASS	VALID FROM
KARLSBORG	4000 DWT, ICE CLASS IA	2017-02-11
LULEÅ-HARAHOLMEN	2000 DWT, ICE CLASS IA	2017-02-11
SKELLEFTEÅ-ÖRNSKÖLDSVIK	2000 DWT, ICE CLASS IC	2017-01-23
ÅNGERMANÄLVEN	2000 DWT, ICE CLASS IC	2017-01-23
HÄRNÖSAND-SKUTSKÄR	2000 DWT, ICE CLASS II	2017-01-23
MÄLAREN	1300 DWT, ICE CLASS IC	2017-02-13
VÄNERN & GÖTA ÄLV	1300 DWT, ICE CLASS IC OR	2017-02-14
SKELLEFTEÅ	2000 DWT, ICE CLASS II	2017-02-21
HOLMSUND-ÖRNSKÖLDSVIK	2000 DWT, ICE CLASS IA	2017-02-21
THE TRAFFIC SEPARATION SCHEME IN THE QUARK IS TEMPORARILY OUT OF USE		2017-02-18

5°	Water temperature, isotherm °C Vattentemperatur, isotherm °C
W	Warm maximum Varmt maximum
C	Cold minimum Kallt minimum

FINNISH RESTRICTIONS TO NAVIGATION		
PORT	MIN. TONNAGE, ICE CLASS	VALID FROM
TORNIO-OULU	4000 DWT, ICE CLASS 1A	2017-02-08
RAAHE-VAASA	2000 DWT, ICE CLASS 1B	2017-02-15
LOVIISA-HAMINA	2000 DWT, ICE CLASS IB OR	2017-02-11
KASKINEN	3000 DWT, ICE CLASS II	2017-02-15
RAAHE	2000 DWT, ICE CLASS II	2017-02-22

For traffic restrictions to Estonia and Russia please visit [www.baltice.org](http://www.baltice.org)

C	S (cm)	F (Ø m)
C <sub>1</sub> C <sub>2</sub> C <sub>3</sub>	0 -	0 < 3 (pancake ice)
S <sub>1</sub> S <sub>2</sub> S <sub>3</sub>	1 - 2	1 - 2
F <sub>1</sub> F <sub>2</sub> F <sub>3</sub>	3 - 10	3 - 20 - 100
	4 - 10 - 15	4 - 100 - 500
	5 - 15 - 30	5 - 500 - 2000
	6 - 30 - 200	6 - 2000 - 10000
	7 - 30 - 70	7 - >10000
	8 - 30 - 50	8 - Fast ice
	9 - 50 - 70	9 - Unknown
	1 - 70 - 120	

10°0'0"E 12°0'0"E 14°0'0"E 16°0'0"E 18°0'0"E 20°0'0"E 22°0'0"E 24°0'0"E 26°0'0"E 28°0'0"E 30°0'0"E