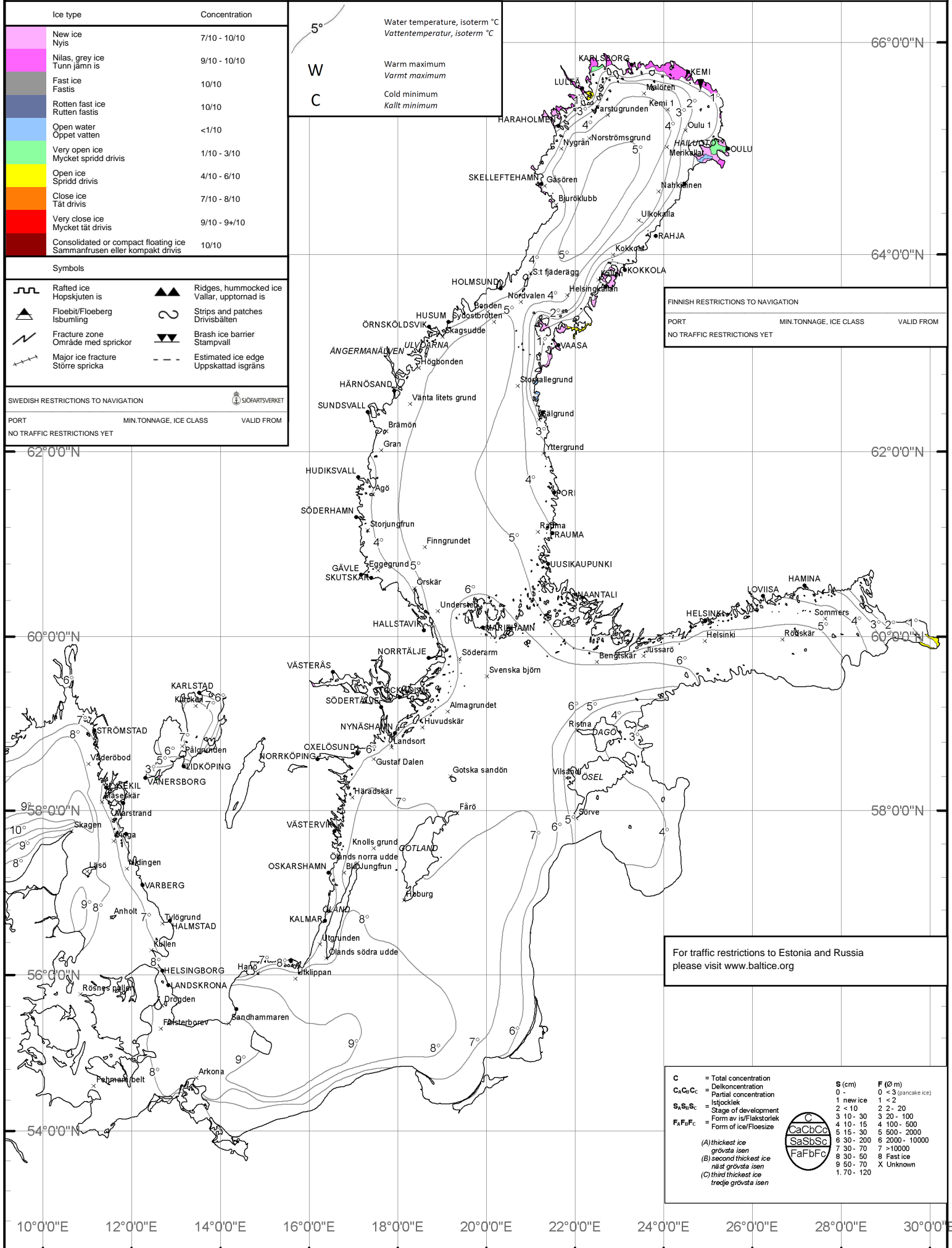


ICE & SEA SURFACE TEMPERATURE IS & YTVATTENTEMPERATUR

VALID DATE: 2016-11-24



Ice type	Concentration
New ice Nyis	7/10 - 10/10
Nilas, grey ice Tunn jämn is	9/10 - 10/10
Fast ice Fastis	10/10
Rotten fast ice Rutten fastis	10/10
Open water Öppet vatten	<1/10
Very open ice Mycket spridd drivis	1/10 - 3/10
Open ice Spridd drivis	4/10 - 6/10
Close ice Tät drivis	7/10 - 8/10
Very close ice Mycket tät drivis	9/10 - 9+10
Consolidated or compact floating ice Sammanfrusen eller kompakt drivis	10/10

Symbols	
	Rafted ice Hopskutjen is
	Floebit/Floeberg Isbumling
	Fracture zone Område med sprickor
	Major ice fracture Större spricka
	Ridges, hummocked ice Vallar, upptornad is
	Strips and patches Drivisbälten
	Brash ice barrier Stampvall
	Estimated ice edge Uppskattad isgräns

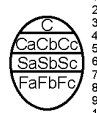
SWEDISH RESTRICTIONS TO NAVIGATION		
PORT	MIN. TONNAGE, ICE CLASS	VALID FROM
NO TRAFFIC RESTRICTIONS YET		

Water temperature, isotherm °C Vattentemperatur, isotherm °C	
W	Warm maximum Varmt maximum
C	Cold minimum Kallt minimum

FINNISH RESTRICTIONS TO NAVIGATION		
PORT	MIN. TONNAGE, ICE CLASS	VALID FROM
NO TRAFFIC RESTRICTIONS YET		

For traffic restrictions to Estonia and Russia
please visit www.baltice.org

C	S (cm)	F (ft)
C = Total concentration	0 -	0 < 3 (pancake ice)
C ₁ C ₂ C ₃ = Delkoncentration	1 -	1 - 2
S ₁ S ₂ S ₃ = Partial concentration	2 < 10	2 - 20
F ₁ F ₂ F ₃ = Stage of development	3 10 - 30	3 20 - 100
	4 10 - 15	4 100 - 500
	5 15 - 30	5 500 - 2000
	6 30 - 200	6 2000 - 10000
	7 30 - 70	7 > 10000
	8 30 - 50	8 Fast ice
	9 50 - 70	9 Unknown
	1 70 - 120	



(A) thickest ice
grövsta isen
(B) second thickest ice
näst grövsta isen
(C) third thickest ice
tredje grövsta isen