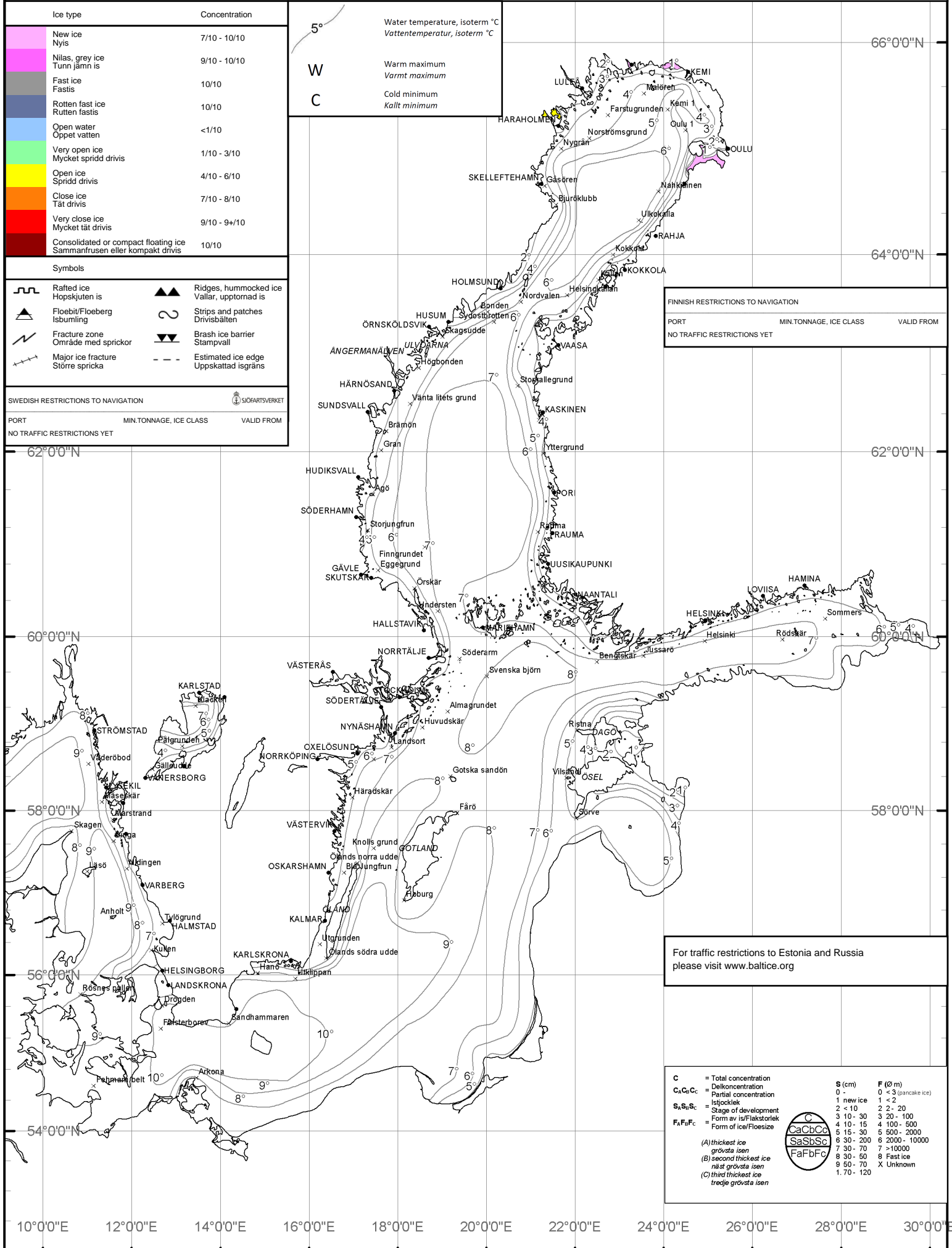


ICE & SEA SURFACE TEMPERATURE IS & YTVATTENTEMPERATUR

VALID DATE: 2016-11-07



Ice type	Concentration
New ice Nyis	7/10 - 10/10
Nillas, grey ice Tunn jämn is	9/10 - 10/10
Fast ice Fastis	10/10
Rotten fast ice Rutten fastis	10/10
Open water Öppet vatten	<1/10
Very open ice Mycket spridd drivis	1/10 - 3/10
Open ice Spridd drivis	4/10 - 6/10
Close ice Tät drivis	7/10 - 8/10
Very close ice Mycket tät drivis	9/10 - 9+10
Consolidated or compact floating ice Sammanfrusen eller kompakt drivis	10/10

Symbols	
	Rafted ice Hopskjuten is
	Floebit/Floeberg Isbumling
	Fracture zone Område med sprickor
	Major ice fracture Större spricka
	Ridges, hummocked ice Vallar, upptornad is
	Strips and patches Drivisbälten
	Brash ice barrier Stampvall
	Estimated ice edge Uppskattad isgräns

SWEDISH RESTRICTIONS TO NAVIGATION		
PORT	MIN. TONNAGE, ICE CLASS	VALID FROM
NO TRAFFIC RESTRICTIONS YET		

5°	Water temperature, isotherm °C Vattentemperatur, isotherm °C	66°0'0"N
W	Warm maximum Varmt maximum	
C	Cold minimum Kallt minimum	

FINNISH RESTRICTIONS TO NAVIGATION		
PORT	MIN. TONNAGE, ICE CLASS	VALID FROM
NO TRAFFIC RESTRICTIONS YET		

For traffic restrictions to Estonia and Russia
please visit www.baltice.org

C	= Total concentration	S (cm)	F (Ø m)
C₁C₂C₃	= Delkoncentration	0 -	0 < 3 (pancake ice)
S₁S₂S₃	= Istocklek	1 new ice	1 < 2
F₁F₂F₃	= Form av is/Floestorlek	2 < 10	2 20 - 200
	= Form of ice/Floesize	3 10 - 30	3 200 - 1000
		4 10 - 15	4 100 - 500
		5 15 - 30	5 500 - 2000
		6 30 - 200	6 2000 - 10000
		7 30 - 70	7 > 10000
		8 30 - 50	8 Fast ice
		9 50 - 70	X Unknown
		1.70 - 120	

10°0'0"E 12°0'0"E 14°0'0"E 16°0'0"E 18°0'0"E 20°0'0"E 22°0'0"E 24°0'0"E 26°0'0"E 28°0'0"E 30°0'0"E