

ICE CHART ISKARTA

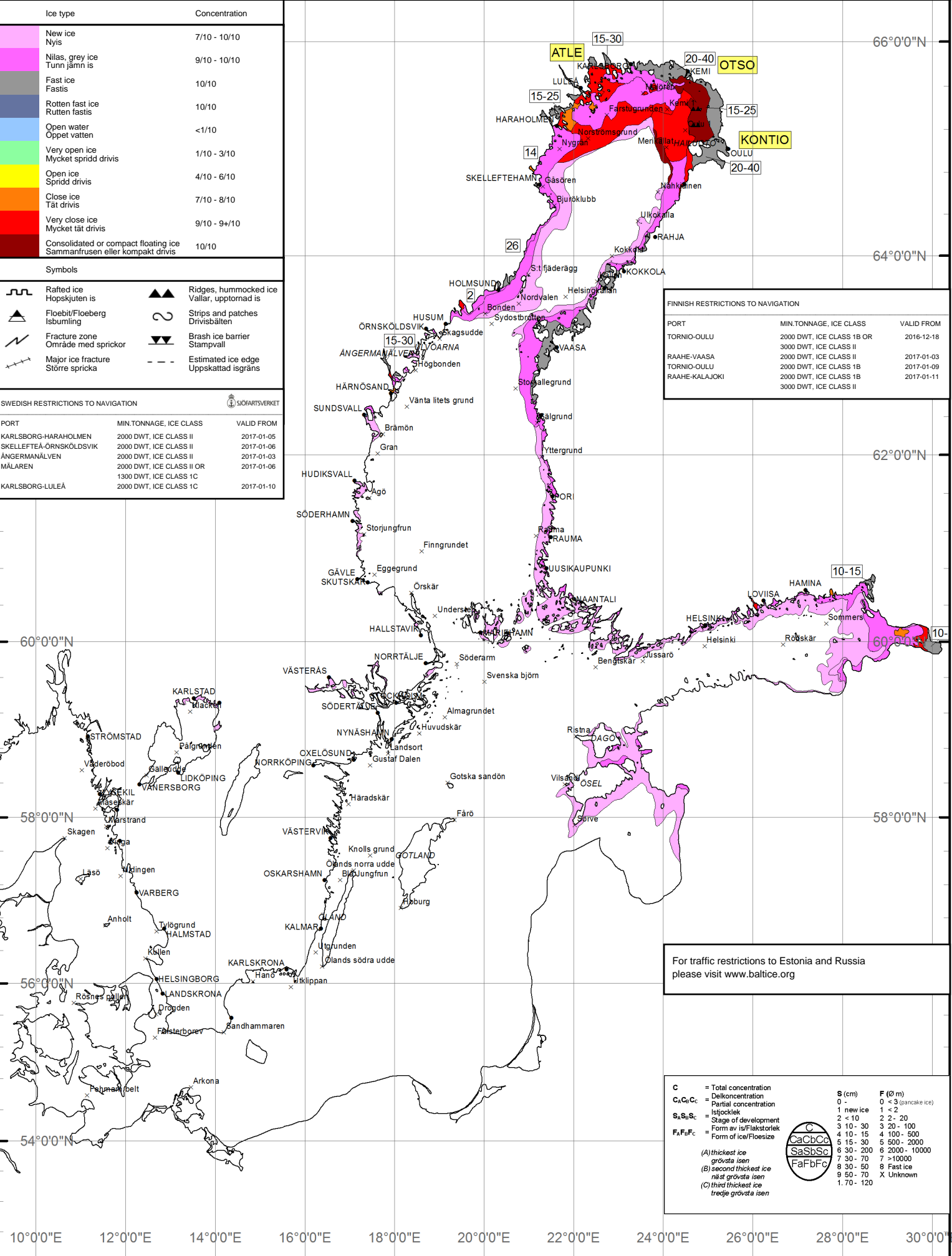
VALID DATE: 2017-01-06

Ice type	Concentration
New ice Nyis	7/10 - 10/10
Nilas, grey ice Tunn jämn is	9/10 - 10/10
Fast ice Fastis	10/10
Rotten fast ice Rutten fastis	10/10
Open water Öppet vatten	<1/10
Very open ice Mycket spridd drivis	1/10 - 3/10
Open ice Spridd drivis	4/10 - 6/10
Close ice Tät drivis	7/10 - 8/10
Very close ice Mycket tät drivis	9/10 - 9+10
Consolidated or compact floating ice Sammanfrusen eller kompakt drivis	10/10

Symbols	
	Rafted ice Hopskjutet is
	Floebit/Floeberg Isbunling
	Fracture zone Område med sprickor
	Major ice fracture Större spricka
	Ridges, hummocked ice Vallar, upptornad is
	Strips and patches Drivisbälten
	Brash ice barrier Stampvall
	Estimated ice edge Uppskattad isgräns

SWEDISH RESTRICTIONS TO NAVIGATION		
PORT	MIN. TONNAGE, ICE CLASS	VALID FROM
KARLSBORG-HARAHOLMEN	2000 DWT, ICE CLASS II	2017-01-05
SKELLEFTEÅ-ÖRNSKÖLDSVIK	2000 DWT, ICE CLASS II	2017-01-06
ÅNGERMANÄLVEN	2000 DWT, ICE CLASS II	2017-01-03
MALAREN	2000 DWT, ICE CLASS II OR	2017-01-06
KARLSBORG-LULEÅ	1300 DWT, ICE CLASS 1C	2017-01-10

FINNISH RESTRICTIONS TO NAVIGATION		
PORT	MIN. TONNAGE, ICE CLASS	VALID FROM
TORNIO-OULU	2000 DWT, ICE CLASS 1B OR 3000 DWT, ICE CLASS II	2016-12-18
RAAHE-VAASA	2000 DWT, ICE CLASS II	2017-01-03
TORNIO-OULU	2000 DWT, ICE CLASS 1B	2017-01-09
RAAHE-KALAJOKI	2000 DWT, ICE CLASS 1B 3000 DWT, ICE CLASS II	2017-01-11



For traffic restrictions to Estonia and Russia please visit www.baltice.org

C	= Total concentration	S (cm)	F (Ø m)
C ₁ C ₂ C ₃	= Delkoncentration	0 -	0 < 3 (pancake ice)
S ₁ S ₂ S ₃	= Istjocklek	1 new ice	1 - 2
F ₁ F ₂ F ₃	= Stage of development	2 < 10	2 - 20
	= Form av is/Flakstorlek	3 10 - 30	3 20 - 100
	= Form of ice/Floesize	4 10 - 15	4 100 - 500
		5 15 - 30	5 500 - 2000
		6 30 - 200	6 2000 - 10000
		7 30 - 70	7 > 10000
		8 30 - 50	8 Fast ice
		9 50 - 70	9 Unknown
		1 70 - 120	X Unknown

