

ICE CHART ISKARTA

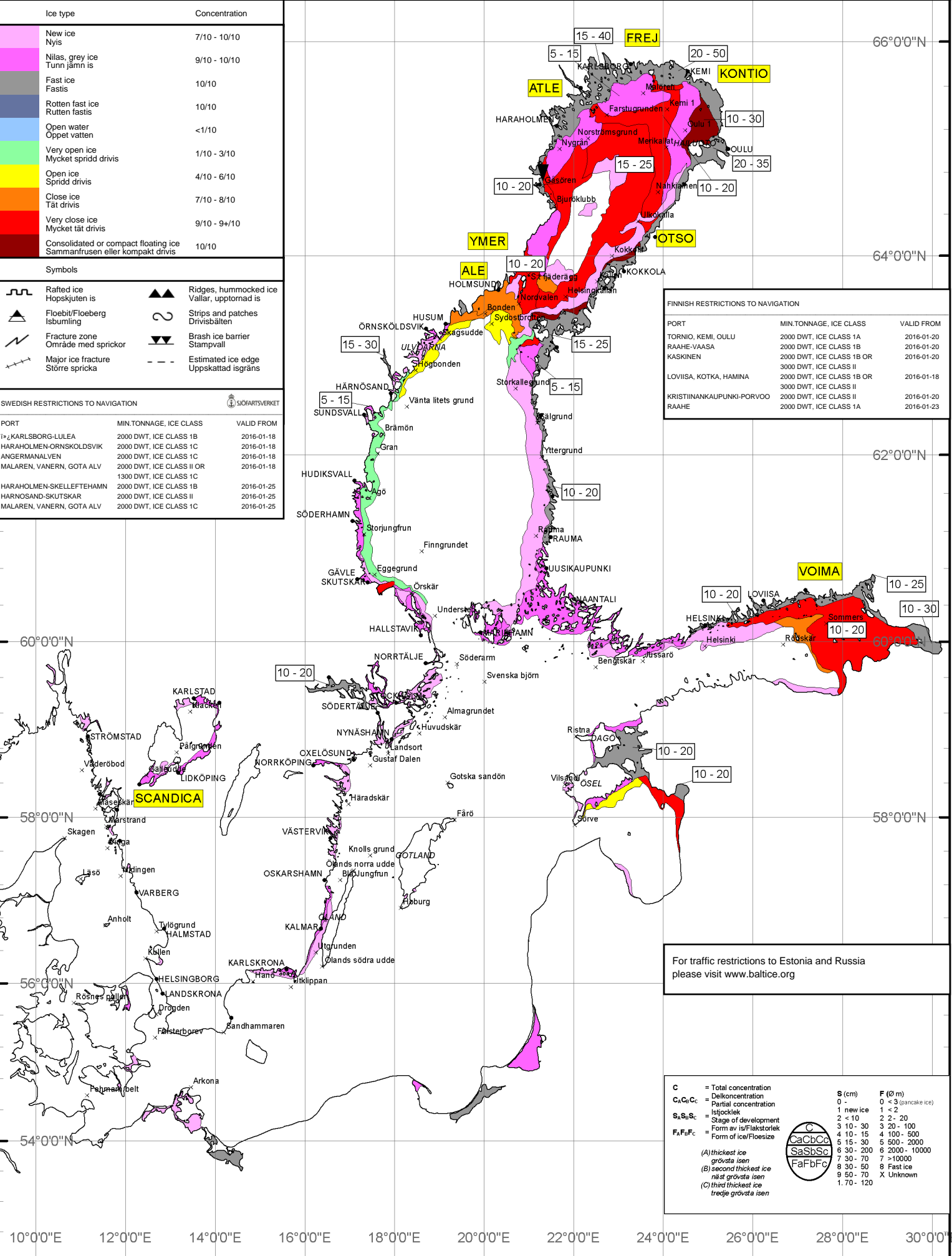
VALID DATE: 2016-01-20

Ice type	Concentration
New ice Nyis	7/10 - 10/10
Nilas, grey ice Tunn jämn is	9/10 - 10/10
Fast ice Fastis	10/10
Rotten fast ice Rutten fastis	10/10
Open water Öppet vatten	<1/10
Very open ice Mycket spridd drivis	1/10 - 3/10
Open ice Spridd drivis	4/10 - 6/10
Close ice Tät drivis	7/10 - 8/10
Very close ice Mycket tät drivis	9/10 - 9+10
Consolidated or compact floating ice Sammanfrusen eller kompakt drivis	10/10

Symbols	
	Rafted ice Hopskutten is
	Floebit/Floeberg Isbumling
	Fracture zone Område med sprickor
	Major ice fracture Större spricka
	Ridges, hummocked ice Vallar, upptornad is
	Strips and patches Drivisbälten
	Brash ice barrier Stampvall
	Estimated ice edge Uppskattad isgräns

SWEDISH RESTRICTIONS TO NAVIGATION		
PORT	MIN. TONNAGE, ICE CLASS	VALID FROM
KARLSBORG-LULEÅ	2000 DWT, ICE CLASS 1B	2016-01-18
HARAHOLMEN-ÖRNSKÖLDSVIK	2000 DWT, ICE CLASS 1C	2016-01-18
ANGERMALVEN	2000 DWT, ICE CLASS 1C	2016-01-18
MALAREN, VANERN, GOTÅLVA	2000 DWT, ICE CLASS II OR	2016-01-18
HARAHOLMEN-SKELEFFTEHAMN	2000 DWT, ICE CLASS 1B	2016-01-25
HARNÖSAND-SKUTSKÄR	2000 DWT, ICE CLASS II	2016-01-25
MALAREN, VANERN, GOTÅLVA	2000 DWT, ICE CLASS 1C	2016-01-25

FINNISH RESTRICTIONS TO NAVIGATION		
PORT	MIN. TONNAGE, ICE CLASS	VALID FROM
TORNIO, KEMI, OULU	2000 DWT, ICE CLASS 1A	2016-01-20
RAAHE-VAASA	2000 DWT, ICE CLASS 1B	2016-01-20
KASKINEN	2000 DWT, ICE CLASS 1B OR	2016-01-20
LOVIISA, KOTKA, HAMINA	2000 DWT, ICE CLASS 1B OR	2016-01-18
KRISTINANKAUPUNKI-PORVOO	2000 DWT, ICE CLASS II	2016-01-20
RAAHE	2000 DWT, ICE CLASS 1A	2016-01-23



For traffic restrictions to Estonia and Russia please visit www.baltice.org

C	S (cm)	F (Ø m)
C = Total concentration	0 -	0 < 3 (pancake ice)
C ₁ C ₂ C ₃ = Delkoncentration	1 new ice	1 - 2
S ₁ S ₂ S ₃ = Stage of development	2 < 10	2 - 20
F ₁ F ₂ F ₃ = Form of ice/Floesize	3 10 - 30	3 20 - 100
	4 10 - 15	4 100 - 500
	5 15 - 30	5 500 - 2000
	6 30 - 200	6 2000 - 10000
	7 30 - 70	7 > 10000
(A) thickest ice	8 30 - 50	8 Fast ice
(B) second thickest ice	9 50 - 70	9 Unknown
(C) third thickest ice	1 70 - 120	