

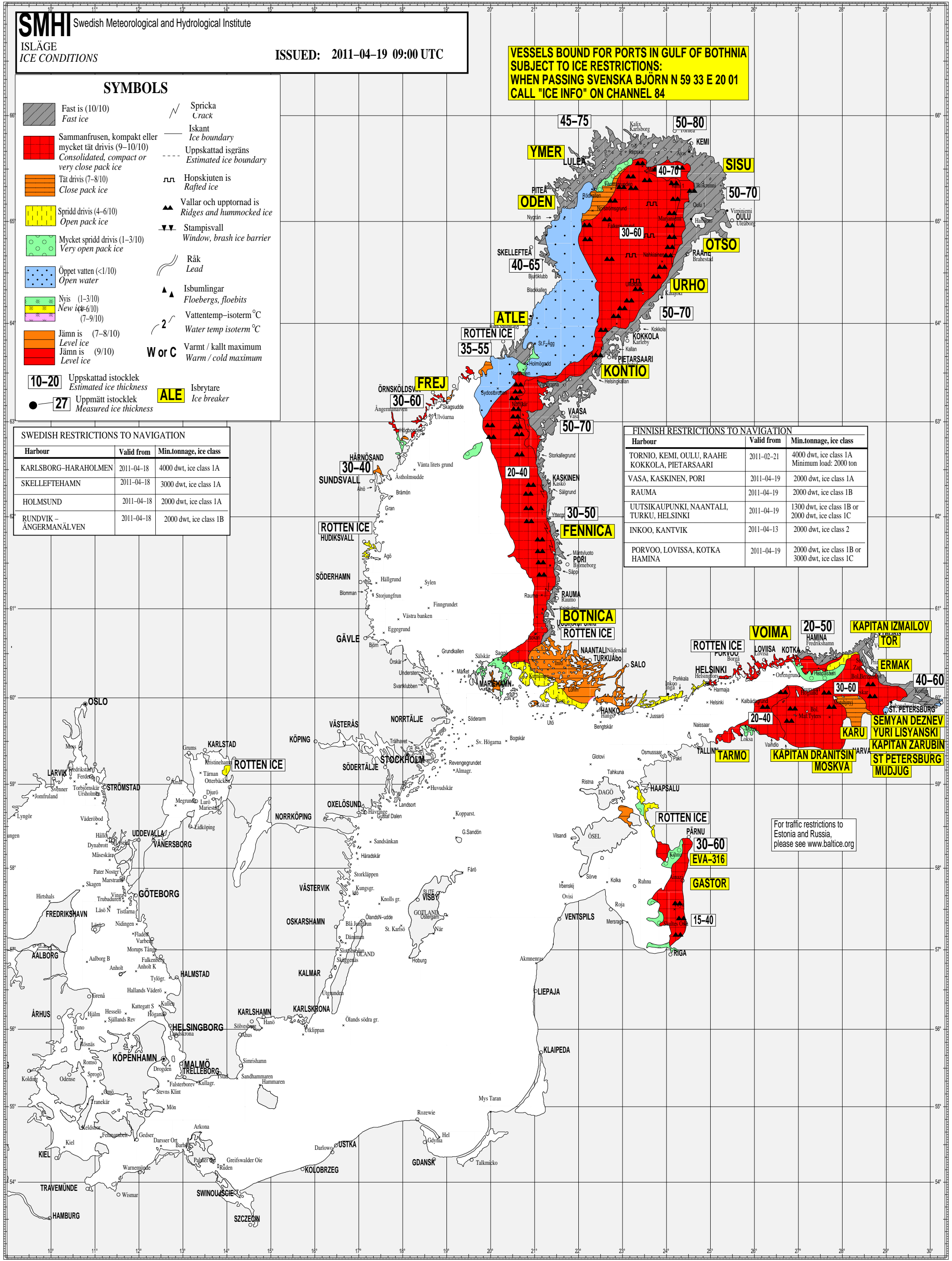
SYMBOLS

	Fast is (10/10) Fast ice		Spricka Crack
	Sammanfrusen, kompakt eller mycket tät drivis (9-10/10) Consolidated, compact or very close pack ice		Iskant Ice boundary
	Tät drivis (7-8/10) Close pack ice		Uppskattad isgräns Estimated ice boundary
	Spridd drivis (4-6/10) Open pack ice		Hopskiuten is Rafted ice
	Mycket spridd drivis (1-3/10) Very open pack ice		Vallar och upptornad is Ridges and hummocked ice
	Öppet vatten (<1/10) Open water		Stampisvall Window, brash ice barrier
	Nysis (1-3/10) New ice (4-6/10) (7-9/10)		Råk Lead
	Jämn is (7-8/10) Level ice (9/10) Level ice		Isbumlingar Floeborgs, floebits
	Uppskattad istocklek Estimated ice thickness		Vattentemp-isoterm °C
	Uppmätt istocklek Measured ice thickness		Varmt / kallt maximum Warm / cold maximum
	ALE Ice breaker		

VESSELS BOUND FOR PORTS IN GULF OF BOTHNIA SUBJECT TO ICE RESTRICTIONS: WHEN PASSING SVENSKA BJÖRN N 59 33 E 20 01 CALL "ICE INFO" ON CHANNEL 84

Harbour	Valid from	Min.tonnage, ice class
KARLSBORG-HARAHOLMEN	2011-04-18	4000 dwt, ice class 1A
SKELLEFTEHAMN	2011-04-18	3000 dwt, ice class 1A
HOLMSUND	2011-04-18	2000 dwt, ice class 1A
RUNDEVIK - ÅNGERMANÄLVEN	2011-04-18	2000 dwt, ice class 1B

Harbour	Valid from	Min.tonnage, ice class
TORNIO, KEMI, OULU, RAAHE, KOKKOLA, PIETARSAARI	2011-02-21	4000 dwt, ice class 1A Minimum load: 2000 ton
VASA, KASKINEN, PORI	2011-04-19	2000 dwt, ice class 1A
RAUMA	2011-04-19	2000 dwt, ice class 1B
UUTSIKAUPUNKI, NAANTALI, TURKU, HELSINKI	2011-04-19	1300 dwt, ice class 1B or 2000 dwt, ice class 1C
INKOO, KANTVIK	2011-04-13	2000 dwt, ice class 2
PORVOO, LOVIISA, KOTKA, HAMINA	2011-04-19	2000 dwt, ice class 1B or 3000 dwt, ice class 1C



For traffic restrictions to Estonia and Russia, please see www.baltice.org