

**VESSELS BOUND FOR PORTS IN GULF OF BOTHNIA  
 SUBJECT TO ICE RESTRICTIONS:  
 WHEN PASSING GOTSKA SANDÖN N 58 25 E 19 10  
 CALL 'ICE INFO' ON VHF CHANNEL 65**

**SYMBOLS**

- Fast is (10/10)
- Sammanfrusen, kompakt eller mycket tät drivis (9-10/10)
- Tät drivis (7-8/10)
- Spridd drivis (4-6/10)
- Mycket spridd drivis (1-3/10)
- Öppet vatten (<1/10)
- Nysis (1-3/10)
- Nysis (4-6/10)
- Nysis (7-9/10)
- Jämn is (7-8/10)
- Jämn is (8-9/10)
- Spricka
- Iskant
- Uppskattad isgräns
- Hodskiuten is
- Vallar och upptornad is
- Stampisvall
- Råk
- Isbumlingar
- Vattentemp isoterm C°
- Varmt / kallt maximum

**C** = Total koncentration, tiondelar  
**CaCbCc** = Delkoncentration  
**SaSbSc** = Istjocklek  
**FaFbFc** = Form av is/flakstorlek

a = grövsta isen, b = näst grövsta isen, c = tunnaste isen  
 a = thickest ice, b = second thickest ice, c = thinnest ice

S	Code	cm	F	Code	m
	0	-		0	< 3
	1	new ice		1	< 2
	2	< 10		2	< 20
	3	10-30		3	20-100
	4	10-15		4	100-500
	5	15-30		5	500-2000
	6	30-200		6	2000-10000
	7	30-70		7	>10000
	8	30-50		8	Fast ice
	9	50-70		9	Unknown
	1*	70-120			

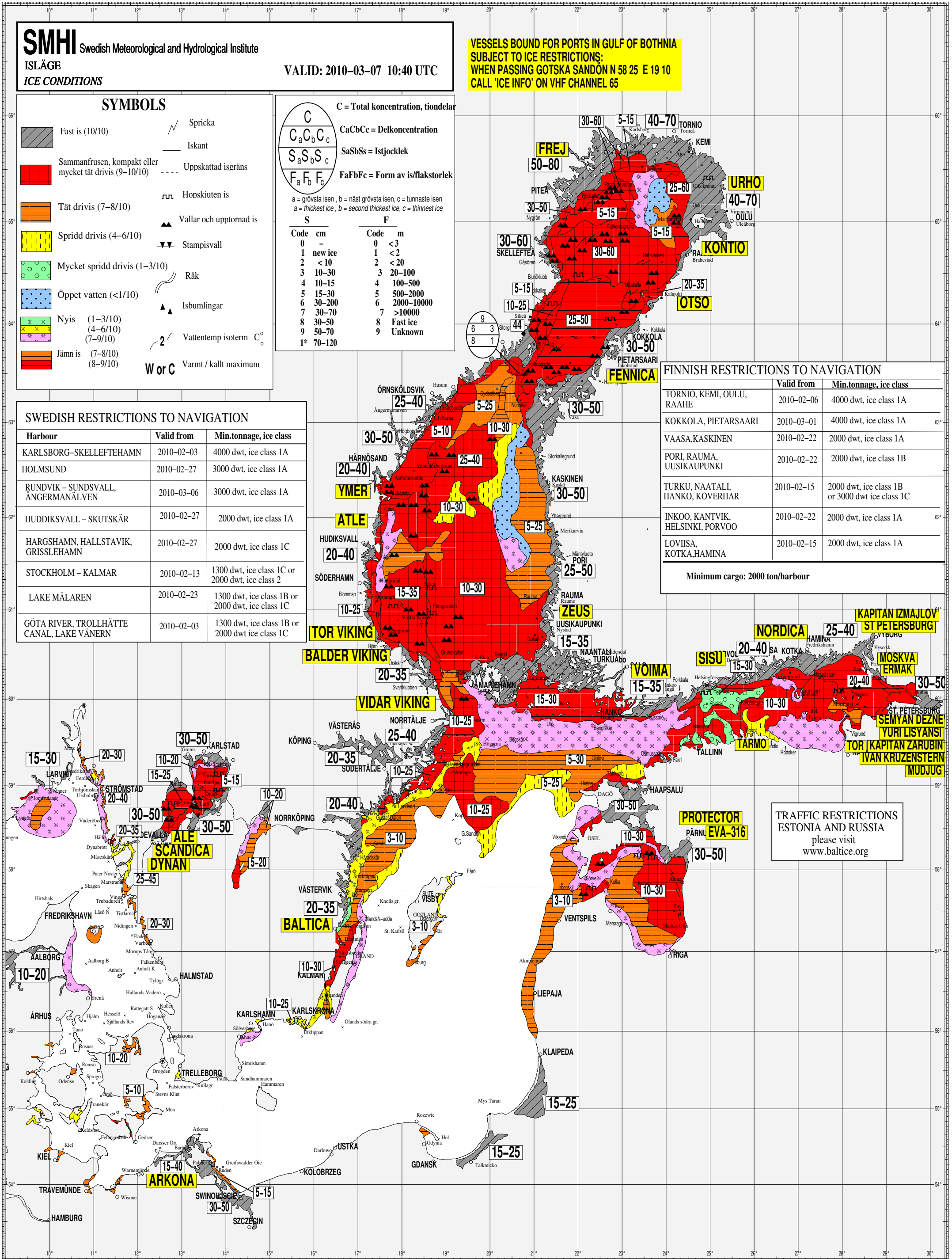
**SWEDISH RESTRICTIONS TO NAVIGATION**

Harbour	Valid from	Min.tonnage, ice class
KARLSBORG-SKELLEFTEHAMN	2010-02-03	4000 dwt, ice class 1A
HOLMSUND	2010-02-27	3000 dwt, ice class 1A
RUNDVIK - SUNDSVALL, ÅNGERMANÄLVEN	2010-03-06	3000 dwt, ice class 1A
HUDDIKSVALL - SKUTSKÅR	2010-02-27	2000 dwt, ice class 1A
HARGSHAMN, HALLSTAVIK, GRISSLEHAMN	2010-02-27	2000 dwt, ice class 1C
STOCKHOLM - KALMAR	2010-02-13	1300 dwt, ice class 1C or 2000 dwt, ice class 2
LAKE MÄLAREN	2010-02-23	1300 dwt, ice class 1B or 2000 dwt, ice class 1C
GÖTA RIVER, TROLLHÄTTE CANAL, LAKE VÄNERN	2010-02-03	1300 dwt, ice class 1B or 2000 dwt, ice class 1C

**FINNISH RESTRICTIONS TO NAVIGATION**

Harbour	Valid from	Min.tonnage, ice class
TORNIO, KEMI, OULU, RAAHE	2010-02-06	4000 dwt, ice class 1A
KOKKOLA, PIETARSAARI	2010-03-01	4000 dwt, ice class 1A
VAASA, KASKINEN	2010-02-22	2000 dwt, ice class 1A
PORI, RAUMA, UUSIKAUPUNKI	2010-02-22	2000 dwt, ice class 1B
TURKU, NAATALI, HANKO, KOVERHAR	2010-02-15	2000 dwt, ice class 1B or 3000 dwt, ice class 1C
INKOO, KANTVIK, HELSINKI, PORVOO	2010-02-22	2000 dwt, ice class 1A
LOVIISA, KOTKA, HAMINA	2010-02-15	2000 dwt, ice class 1A

Minimum cargo: 2000 ton/harbour



TRAFFIC RESTRICTIONS  
 ESTONIA AND RUSSIA  
 please visit  
[www.baltice.org](http://www.baltice.org)